

INDONESIA

RENAISSANCE ROYALE ENTERTAINMENT COMPLEX



With over two decades of night entertainment experience in Surabaya-Indonesia's second-largest city, the **Top Ten Group** have embarked on their grandest venture to date with the opening of the **Renaissance Royale Entertainment Complex**. To be able to offer a complete entertainment venue to cater to just about every club demographic is seen as a pinnacle in every club owner's ambition. And it is only through experience that one can understand that the key to having a successful entertainment establishment comes from grasping the operational dynamics of the club industry and by making possible the diverse penchants of a multi-generational clientele and fast changing trends.

While dance clubs and KTVs are now common in Surabaya's entertainment scene, it must be said that its profusion contrasts with the rare chance of finding a genuine establishment that offers a comprehensive entertainment concept under one roof. In Indonesia, the perception of the executive multi-venue concept is viewed as being the most trendy and vibrant among the nightspot establishments. Located in the heart of the city, and occupying a built-up area encompassing three floors inside the Royal Plaza (a prime shopping mall) the Renaissance Royale Entertainment Complex is undeniably one of the more comprehensive establishments which incorporate all the contemporary facilities befitting of a top entertainment venue. Arriving at the main lobby, patrons are immediately greeted with a choice of four venues to decide from: the relaxing services of the **Celsius Spa**; having a meal at **Spoons Restaurant & Lounge**; a party with friends in one of the 26 private rooms in **RHYTHM KTV**, or dance the night away in **CLUB 360** - a high octane live music venue.



Club 360



FOH system using Funktion-One Resolution 2 and Resolution 2 SH boxes



Funktion-One F218 & F221 subs

CLUB 360°

Club 360° is the liveliest venue in the Renaissance Royale Entertainment Complex. The owners chose to name it because 360° means a perfect circle and here is where the best in entertainment, sound, and ambience unite in a full circle. The unique interior of the club is a spacious circular room of a single level where high tables are closely and concentrically



arranged around a high circular catwalk stage. At the back of the club are private alcoves with plush leather sofas. The integration of LED based colour changing lighting into the interior design – walls, floor, stage, and bar — chromatically adds an overall sense of vibrancy to the atmosphere. The club's concept is modelled as a live venue for the young and trendy, fronting a high energy band and even having their own resident '360 Dancers' heating up onstage with slick performances during the DJ sets. And it's also the resident DJs - who all originate from Surabaya – with experience in the local dance scene, along with a number of guest DJs who enlivens the night's atmosphere, playing Rap, R&B, Hip Hop, Indie and local dance tracks and keep the crowd wanting for more. As a top venue in the city, the club has been very active with sponsorship parties and event nights with a full schedule filling every weekend.

Because good sound reinforcement and lighting effects plays a key role in a club's dynamics, understanding the crux of the sound and lighting for such a high octane establishment is no small matter. Though less than 20m distance from the stage to the (seating) alcoves in the back, the owners' requirement of the 360's main sound

system was that it had to feel as powerful as a live concert system. For this the Funktion-One Resolution series was chosen. Steven Yeow, who heads the Audio & Lighting Engineering team for Top Ten Group, was tasked to design and install the sound & lighting system for 360 (including Rhythm KTV). For the main PA, Steven decided using two hangs at the left and right above the stage, with each hang (2+2+2) made up of 2 Funktion-One Resolution 2 SH (Mid-High Section) coupled with 4 Funktion-One Resolution 2 (Full Range Mid-Top) boxes. To complete the main system, two stacks of low

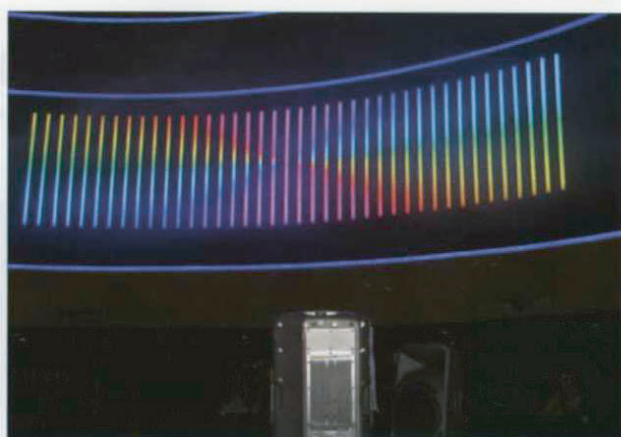


Colour changing effects at the Bar

INDONESIA



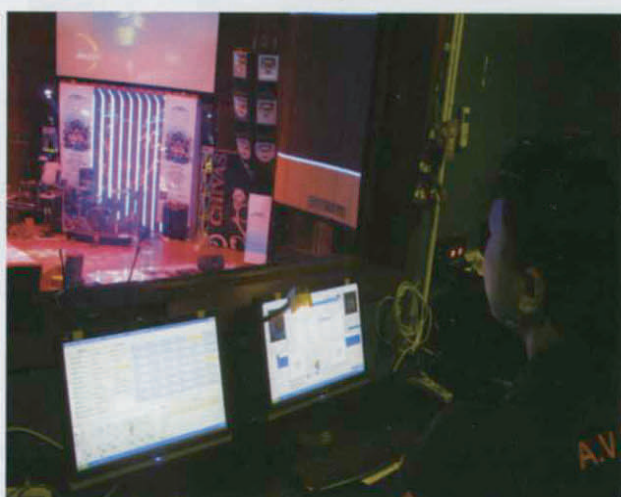
Private alcoves encircle the club



LEDs play an important role to the club's ambience



The custom circular truss was designed to hold future upgrades to the lighting system



Lighting operator using the Daslight DVC2 lighting controller

frequency reinforcement subs are positioned at the far left and right side of the stage. Each stack consists of a massive Funktion-One F221 Subwoofer underneath 2 Funktion-One F218 Subs. Because the club's unique circular interior has no columns or pillars obstructing the sound path, rear-fill was not needed; however the extreme ends of the alcoves facing the side of the stage were covered by a single Martin Audio F15 Blackline cabinet (as side-fill) at each location.

Centred in the middle of the catwalk is the (circular) DJ booth. The club has 3 DJs, each a master in their own genre of dance music. Every night the club's resident (and guests) DJs mixes his or her favourite tracks from a set-up comprising 3 CDJ 1000 MK III and a DJM 800 mixer. Other DJ equipment includes a Pioneer CD Player, Technics RP-DH 1260 Headset and a pair of Mackie SRM 450 Active Speakers as DJ booth monitors. Onstage, the band's hardware includes: a Rane SM26B (Splitter), 2 DBX IEQ-31, a Rane DEQ 60L, and a Yamaha SPX2000 (Multi Effect Processor). Microphone facility for the singers are (3 sets)



Deliya moving heads on cue

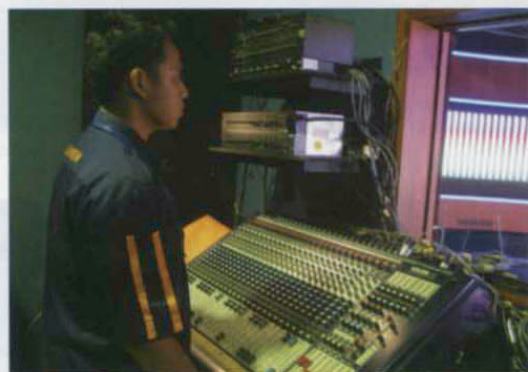
install

Sennheiser EM 100 wireless units. Foldback is via 4 Mackie SRM450 (Active Speakers) wedges.

Designing the lighting system is a take after its moniker – 360 – with a custom fabricated circular lighting truss reaching 10m high (from a 12m ceiling) above the main club connected with a V-shape truss above the stage. An AT-Laser Hera II 2-watt multicolour laser and an **Antari Z-1500 Series II DMX** high power fog machine are mounted 4m high and facing the stage. The high position of the fog delivery system creates



Just one Antari Z-1500 Series II fogger was powerful enough for the entire club



Soundcraft as main house mixing console



The processing and power racks



The Grand Opening of CLUB 360 on March 2009 was a 2-day celebration featuring top local DJs

a cloud-like projection surface over the patrons while the animated effects from the multicolour laser and moving lights adds to the dynamism of the overall lighting effect. Lighting fixtures for the club are 12 Deliya Vision 1900 moving heads, 4 Deliya S980 Scanners, and 8 iSolution (iColor) IC-4 DMX

colour mixers. Every night, the lighting operator spots the lighting cues from a **Daslight DVC 2 DMX512** controller which also allows him to do real-time beam control (as a follow spot for the singer) from either a moving head or a scanner.



VIP KTV room



AV system in the VIP KTV

install

The control room sits one level up and directly faces the stage and has a great overall view of the main floor and service bar – allowing the lighting operator an almost unobstructed view to program his moving light scenes. The resident sound engineer's uses a Soundcraft GB4 24-channel live mixing console. Here also are the audio system's power and processing racks with: 2 XTA DP 266 Controllers, a Drawmer DA-6 Distribution Amplifier, 3 Camco DX12 Power Amplifiers, 4 QSC PLX3402 & 1 QSC PLX1602 Power Amplifiers, 2 MC2 MC1250 Power Amplifiers, and 2 Funktion-One E45 Power Amplifiers.

RHYTHM K-TV

The karaoke culture is very deeply rooted in Indonesia and even seems to grow more popular with the new PMEB (professional, manager, executive and businessman) generation. Rhythm was built and designed to cater to this growing niche of elite clientele. The concept of entertaining with friends for many hours in the private setting of a KTV room is very much a big business in Surabaya that KTV rooms have become more elaborate and unique to the level of offering a full service in-room bar and dining area, shower facility and even sleeping



Luxury VIP room with a service bar and dining area



The dining area in a VIP room



RCF 4PRO Series 3001A loudspeakers for all the KTV rooms

accommodation. RHYTHM boasts a total of 26 private KTV rooms ranging from a standard room that can sit 8-12 people up to the luxurious VIP suite that can fit a wedding reception. All the rooms have been designed to provide a highly functional ambiance - warm lighting, sufficient space, and comfortable seating. Because KTV rooms in Indonesia usually also double as a private party room, designing the sound reinforcement for the KTV room requires each system to perform as it would in a club. Steven Yeow was put in charge of the AV system design for the rooms. For each room he opted to use 2 RCF 4PRO Series 3001A active loudspeaker mounted



RCF 4PRO Series 3001A loudspeaker



in a horizontal dispersion. Delivering 130 db or 400 watts of raw energy (350 watts on low frequency and 50 watts of high frequency power) these full range systems are literally powerful enough to "shake the walls off." Bass is very big" on demand here and so 2 Tasso 18" subwoofers powered by a Harman HA-2240 amplifier to augment the RCF for more awesome sound. Speaker management is through a DBX Drive Rack 260 controller.

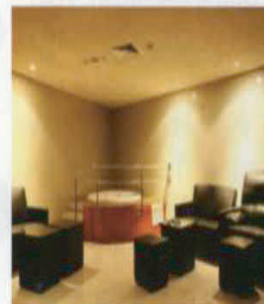
The karaoke system uses the BMB DAR-300 integrated-amplifier. The video system in each room comprises multiple units of 40" LCD TVs.

CELSIUS SPA & SPOON



The complex also boasts a world-class health spa facility called Celsius, which allows guests to fully refresh and rejuvenate their tired bodies after a hard day at the office. The very latest facilities and services in Celsius rank it as one of the best in Indonesia. Adjoining the Celsius Spa is Spoons Restaurant & Lounge - a fully staffed bistro where guests can casually sit, meet, or just relax over a light meal or a selection of refreshing beverages. Its undeniable that the concept of having all these facilities under one roof makes your visit easier and more pleasurable, but more importantly proves that the Renaissance Royale Entertainment Complex continues to live up to their guests whims and expectation and is deservedly seen as a shining example in Surabaya's swanky nightlife and entertainment scene.

www.renaissanceroyale.com



Celsius



Spoon